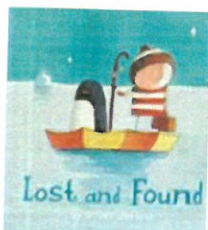


Week beginning: 15th January 2024

This week in Maple

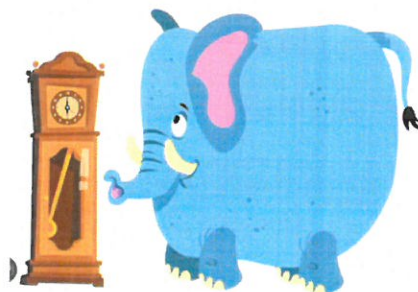
Book of the week:

Lost and Found and
When Will it Be Spring



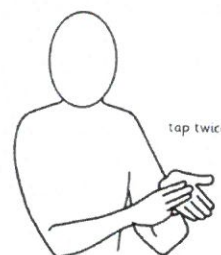
Rhyme of the week:

Hickory Dickory Dock



Sign of the week:

Mummy



Mother/Mum

In Phonics we will be:

- Reading stories that rhyme and identifying the rhyming words within them.
- Playing a game of 'Silly Soup' and identifying objects that sound the same.

In Maths we will be:

- Continuing to develop our subitising skills by playing a range of maths games.
- Beginning to identify and continue ABAB patterns using natural loose parts.

Indoor and Outdoor learning:

- Continuing to learn about snow (hopefully we will get some) and creating our own snow in the classroom.
- Learning about the artist Wassily Kandinsky and using our shape knowledge to create paintings in this style.
- Developing our imaginative skills by creating igloos in our deconstructed role play area.

Help At Home:

Patterns, patterns everywhere

Spend time noticing patterns in your house. This could be through a game of eye spy or going on a pattern hunt.



Dates for your diary:

- We would like to invite Grandparents to join us for a 'stay and play' session which will take place in the morning of Wednesday 17th January. Please let us know if you can make it?

We are here to help. If you have any questions or concerns, please talk to your child's keyworker or any of the staff in Maple.