

# We Are Artists Theme Week - This week in Maple

## Book of the week:

The Dot, I Am An Artist



## Rhyme of the week:

Hickory Dickory Dock

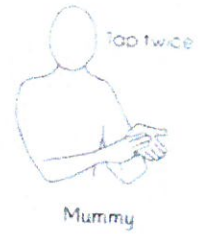


## Happy Thought:



the rain won't last forever

## Sign of the week:



## In Maths we will be:

- Counting objects in play and saying how many there are altogether
- Playing simple counting games, such as feeding a toy or counting surprise objects
- Practising counting from 1–10 using songs, actions and everyday materials
- Using number language like how many, altogether and more



## In Phonics we will be:

- Listening carefully to sounds in words through stories, songs and games
- Enjoying rhymes and repeated language in familiar stories and rhyming activities
- Playing simple listening games to notice sounds that are the same
- Developing speaking and listening skills by joining in with songs and following simple instructions



## Learning opportunities:

This week in our enhanced and continuous provision, the children will have opportunities to:

- Building dens and structures using fabrics, pegs and deconstructed role-play resources.
- Exploring mark making with paint, including dripping, splashing and painting on different surfaces.
- Using glue, junk modelling and textured materials to stick, layer and build creations, noticing how glue changes as it dries.
- Salt Pots will be visiting to create unique clay art with your child.

## Help at Home:

### Family Photograph Request

We love playing in our home corner and have noticed how much the children enjoy looking at and talking about their special family photographs there. If you are able to, please send in a family photograph for us to display in our special family photo frame on the wall. This helps support children's sense of belonging and encourages lots of lovely conversations.

Thank you for your support 😊

## Dates for your diary:

Wednesday 21st January - Salt Pots visit

Wednesday 28th January - Owl Visit

We are here to help. If you have any questions or concerns, please talk to your child's keyworker or any of the staff in Maple.